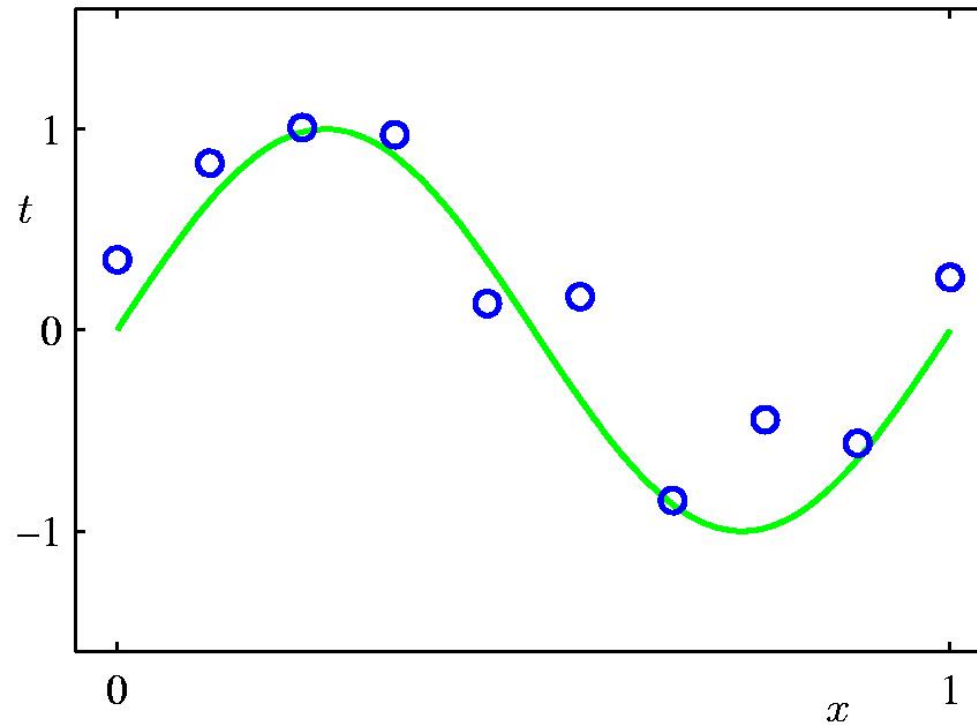


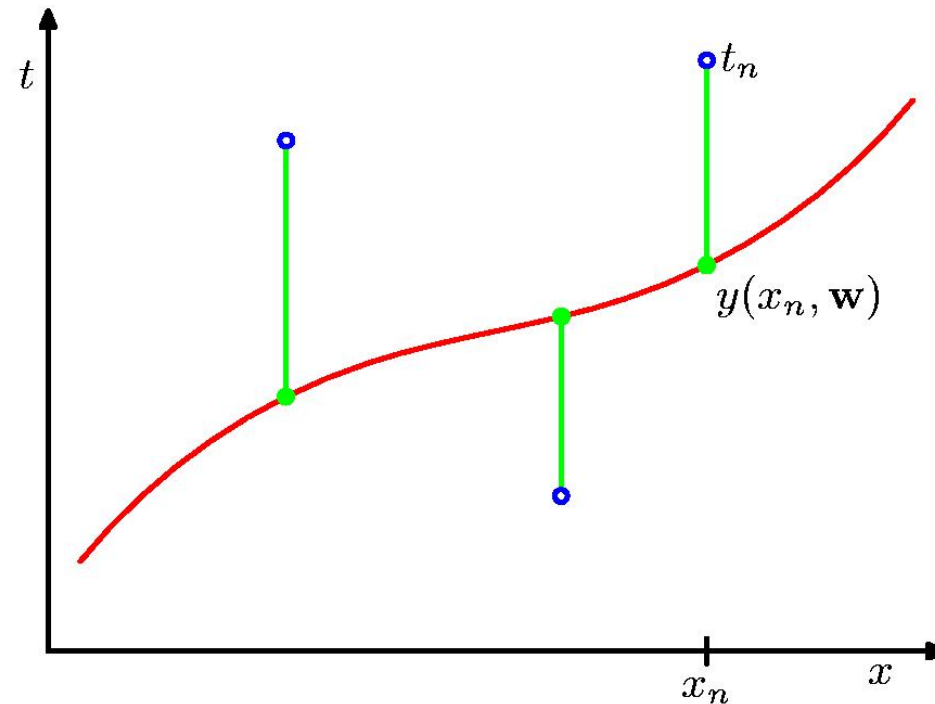
Introduction

Polynomial Curve Fitting



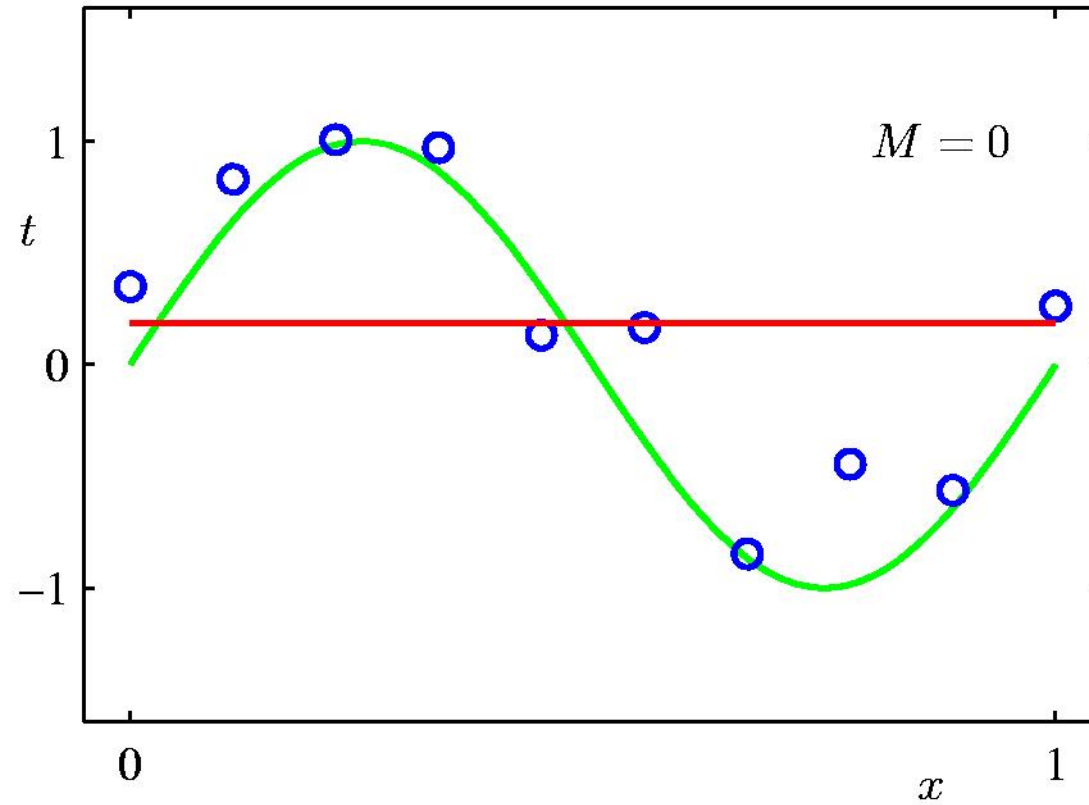
$$y(x, \mathbf{w}) = w_0 + w_1x + w_2x^2 + \dots + w_Mx^M = \sum_{j=0}^M w_j x^j$$

Sum-of-Squares Error Function

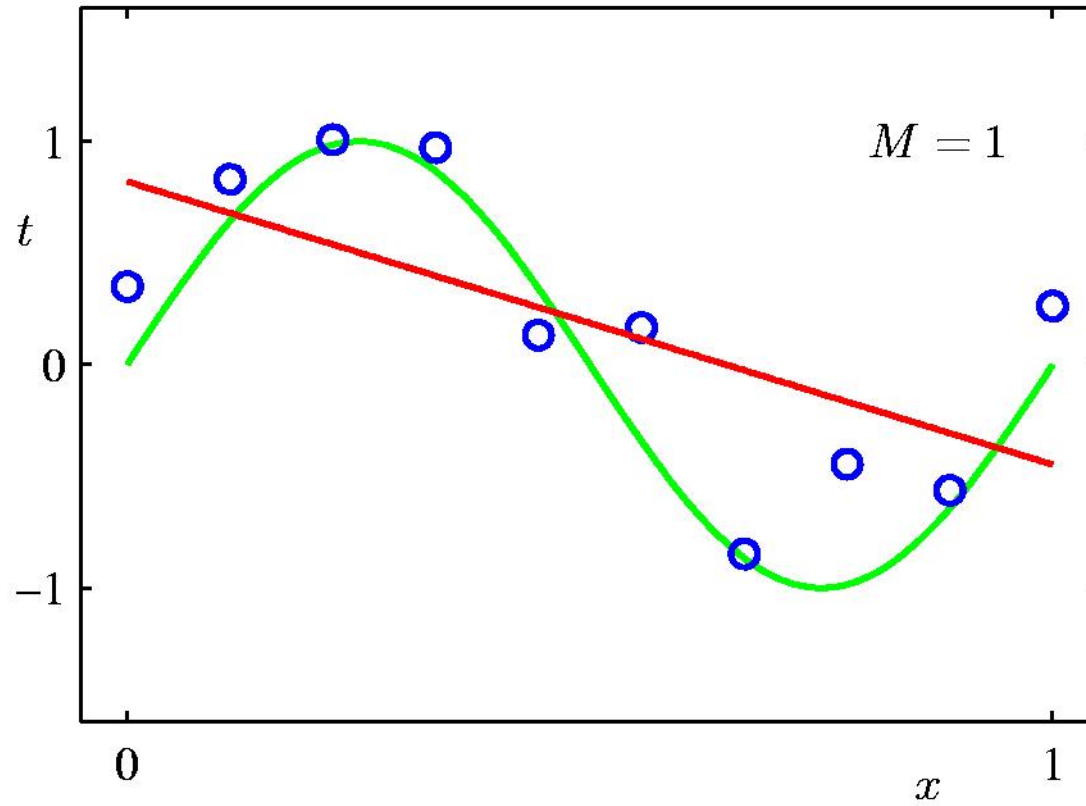


$$E(\mathbf{w}) = \frac{1}{2} \sum_{n=1}^N \{y(x_n, \mathbf{w}) - t_n\}^2$$

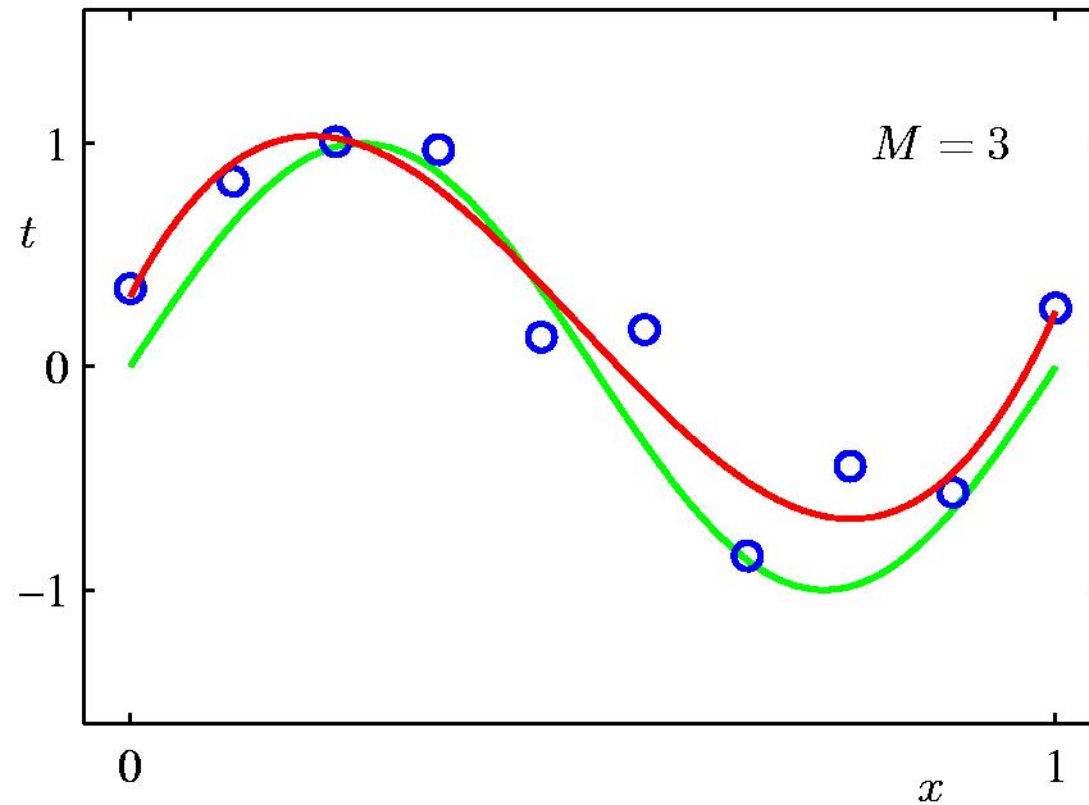
0th Order Polynomial



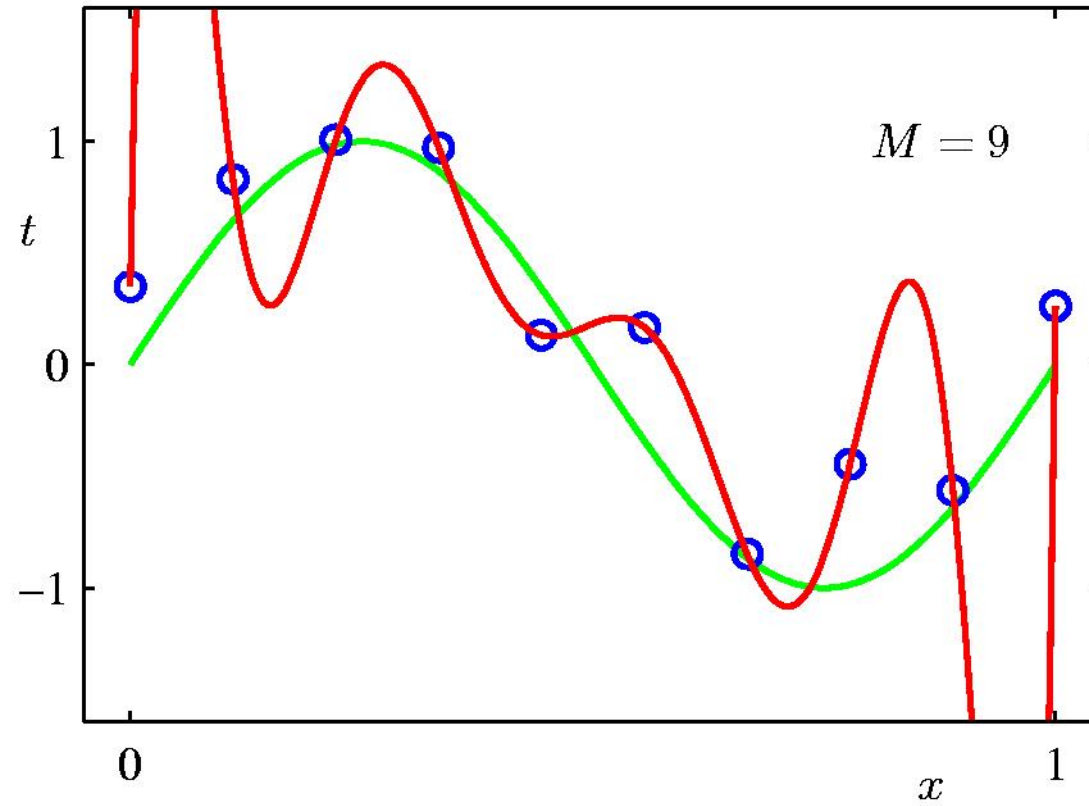
1st Order Polynomial



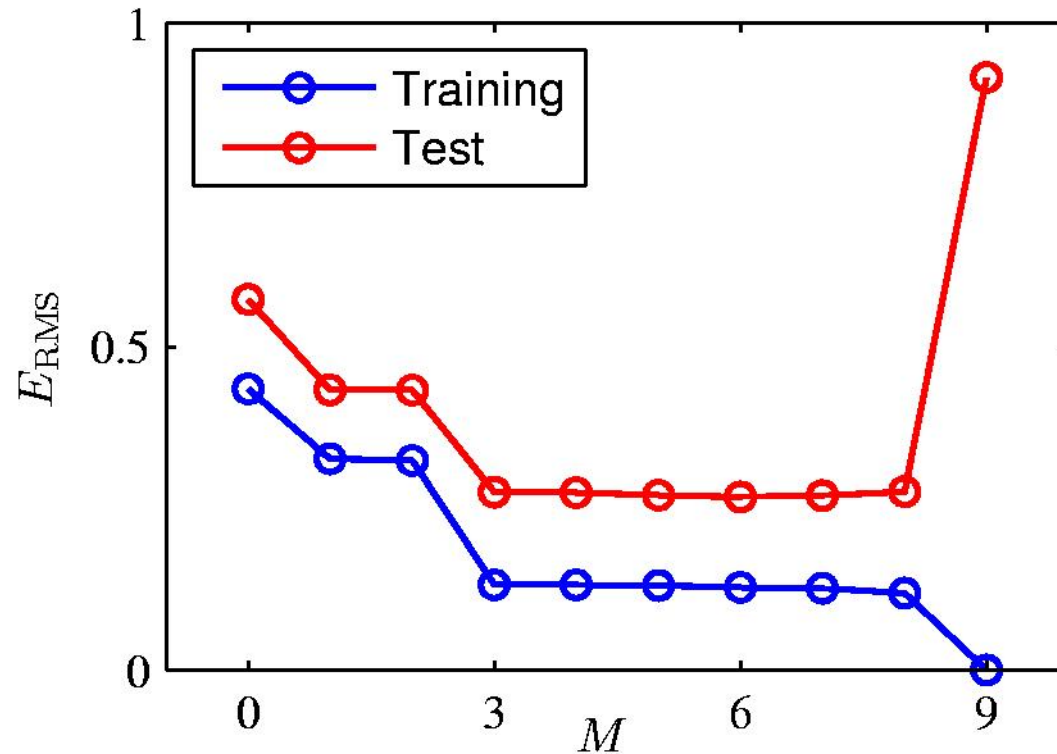
3rd Order Polynomial



9th Order Polynomial



Over-fitting



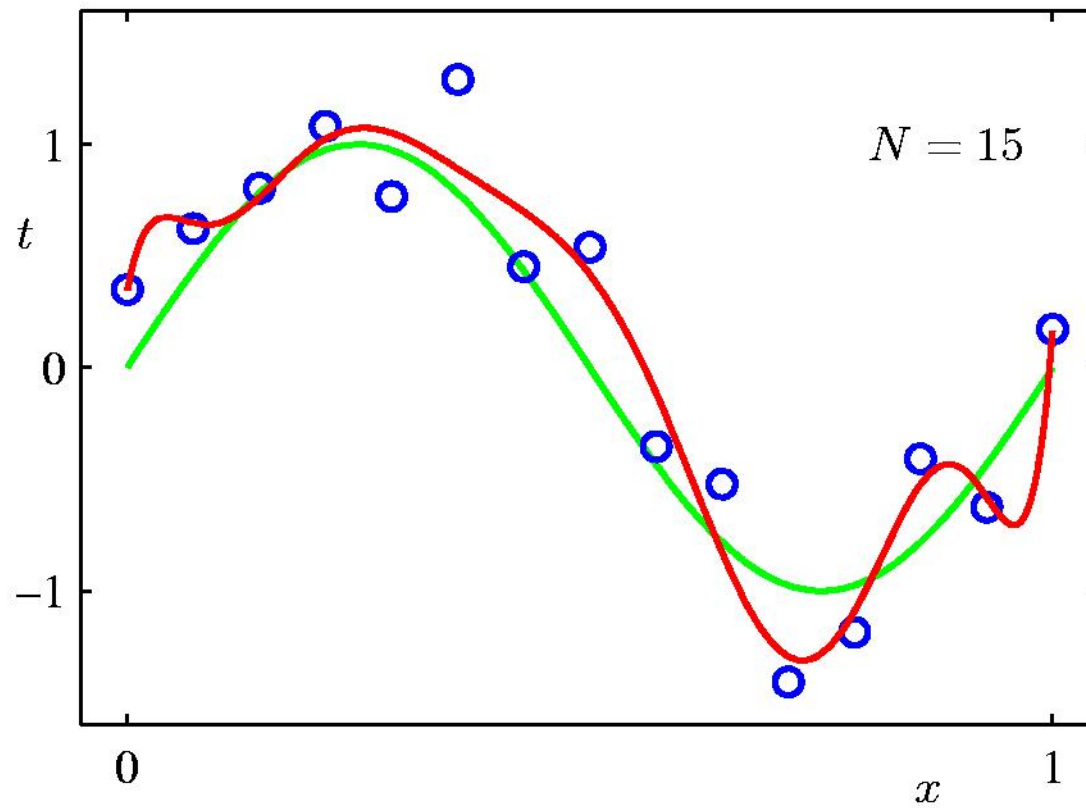
Root-Mean-Square (RMS) Error: $E_{\text{RMS}} = \sqrt{2E(\mathbf{w}^*)/N}$

Polynomial Coefficients

	$M = 0$	$M = 1$	$M = 3$	$M = 9$
w_0^*	0.19	0.82	0.31	0.35
w_1^*		-1.27	7.99	232.37
w_2^*			-25.43	-5321.83
w_3^*			17.37	48568.31
w_4^*				-231639.30
w_5^*				640042.26
w_6^*				-1061800.52
w_7^*				1042400.18
w_8^*				-557682.99
w_9^*				125201.43

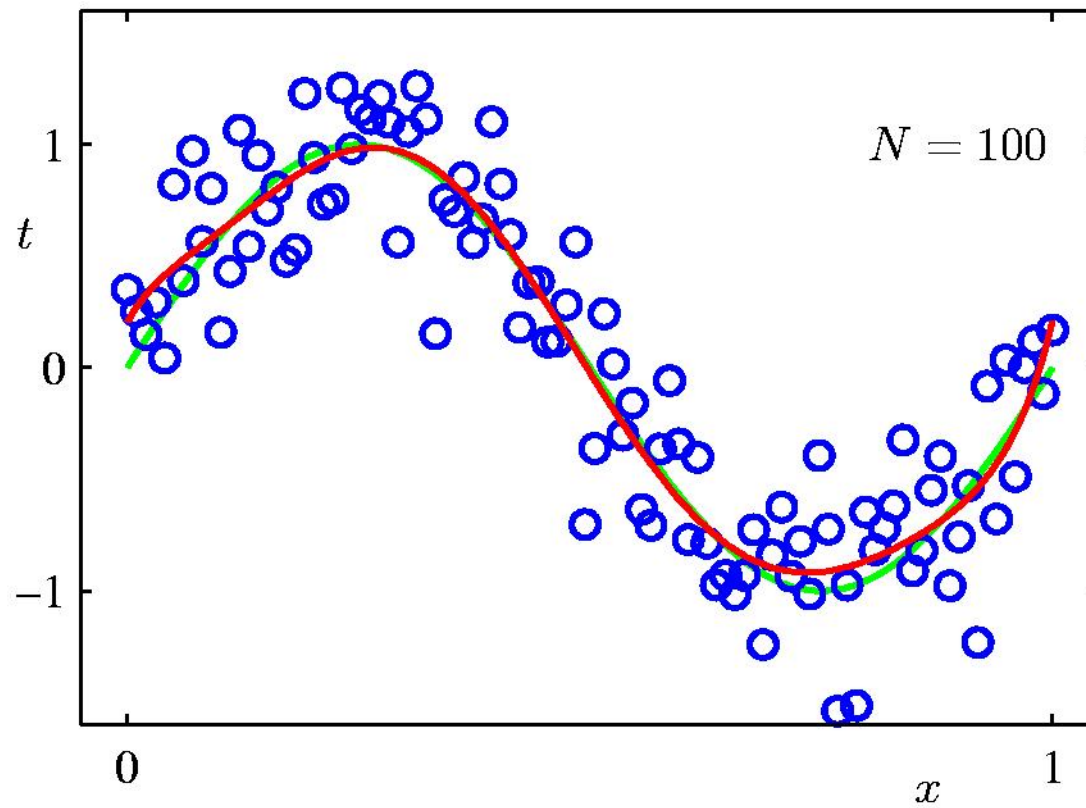
Data Set Size: $N = 15$

9th Order Polynomial



Data Set Size: $N = 100$

9th Order Polynomial



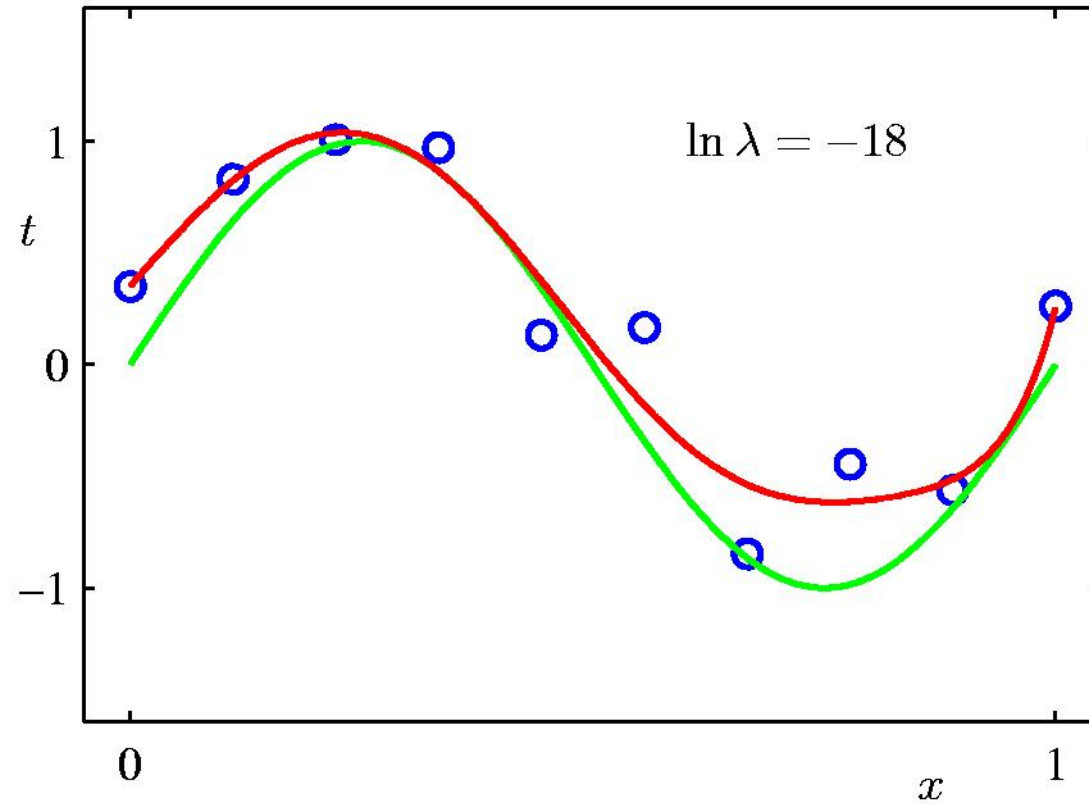
Regularization

Penalize large coefficient values

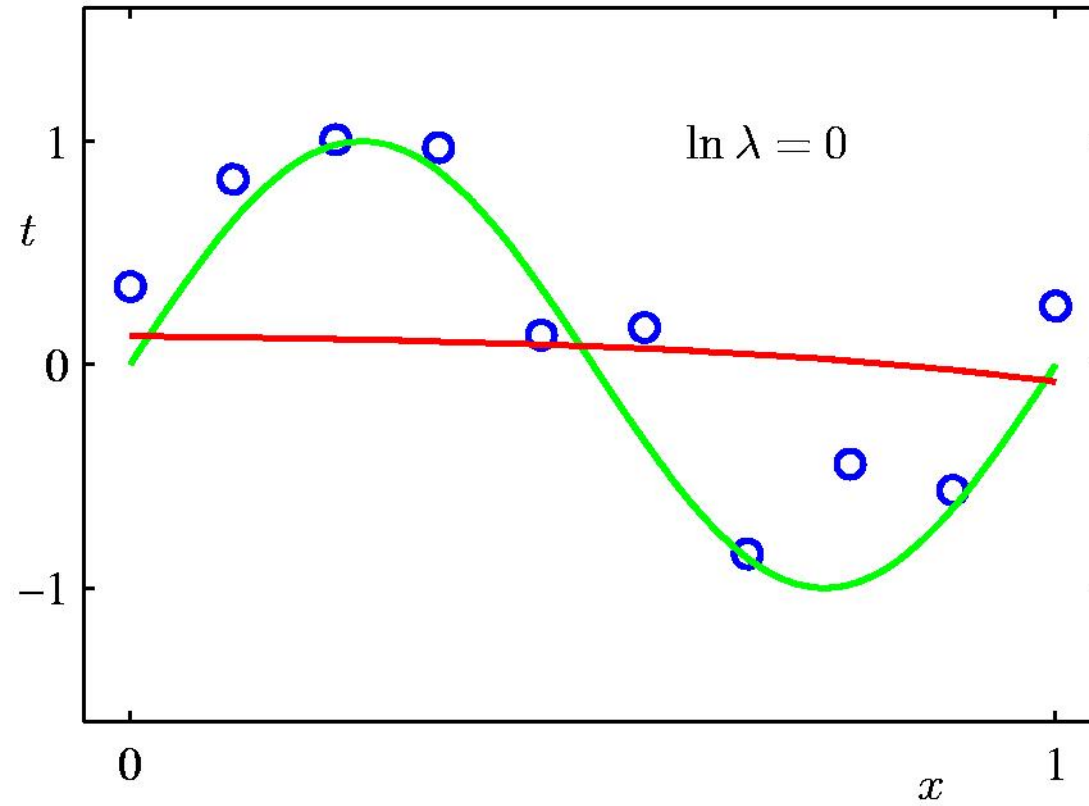
$$\tilde{E}(\mathbf{w}) = \frac{1}{2} \sum_{n=1}^N \{y(x_n, \mathbf{w}) - t_n\}^2 + \frac{\lambda}{2} \|\mathbf{w}\|^2$$



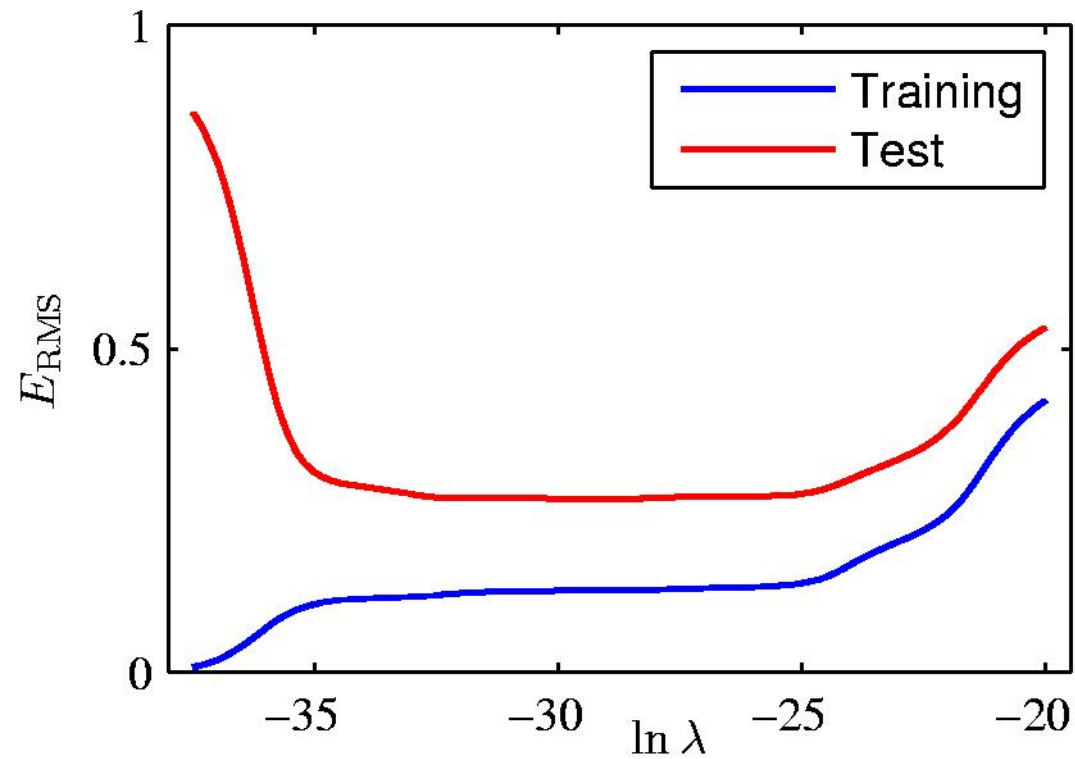
Regularization: $\ln \lambda = -18$



Regularization: $\ln \lambda = 0$



Regularization: E_{RMS} vs. $\ln \lambda$



Polynomial Coefficients

	$\ln \lambda = -\infty$	$\ln \lambda = -18$	$\ln \lambda = 0$
w_0^*	0.35	0.35	0.13
w_1^*	232.37	4.74	-0.05
w_2^*	-5321.83	-0.77	-0.06
w_3^*	48568.31	-31.97	-0.05
w_4^*	-231639.30	-3.89	-0.03
w_5^*	640042.26	55.28	-0.02
w_6^*	-1061800.52	41.32	-0.01
w_7^*	1042400.18	-45.95	-0.00
w_8^*	-557682.99	-91.53	0.00
w_9^*	125201.43	72.68	0.01
